



Digital Doc Blu X-Ray Sensor Configuration Guide

Ver. 1.0.0

Table of Contents:

Description	<u>1</u>
Running the Driver Installer	<u>2</u>
Dexis Imaging by Kavo	<u>3</u>
Eaglesoft by Patterson Dental	<u>5</u>
Apteryx by PlanetDDS	<u>8</u>
CurveHero	<u>10</u>
Dentrix Ascend	<u>12</u>
Sidexis 4 by Sirona	<u>14</u>
Adjusting Image Contrast	<u>16</u>
Dentrix Bridge Fix	<u>17</u>
Troubleshooting	<u>18</u>
Contact Technical Support	<u>18</u>

1. Description:

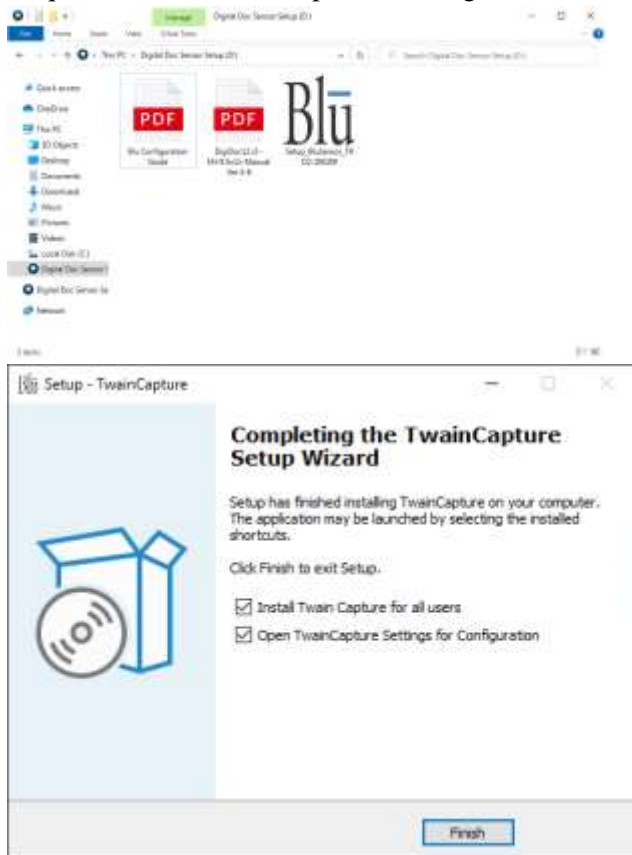
This document is intended to cover the technical configuration of the Blu Sensor in various Dental Image Acquisition platforms. The Blu Sensor uses a TWAIN interface which in some cases requires special settings and exceptions to generate quality radiographs. Various Dental Image Acquisition software will not auto generate information related to Tooth Numbers, Acquisition Dates, and Exam Types, this is a missing feature from the application and not the responsibility of the Blu Driver. There are included settings available in the driver for Image filtering, please refer to the ‘Adjusting Image Contrast’ section for more details. Digital Doc advises following these processes but ultimately leaves diagnosis at the discretion of trained dental or medical staff. Digital Doc recommends use of the sensor in tandem with a modern Operating System and High Resolution Display. As Dental software updates and changes, so must this guide, please ensure you are viewing the latest version by going to: www.Digi-Doc.com and checking the support page for the Blu X-Ray Sensor.



Digital Doc Blu X-Ray Sensor Configuration Guide

2. Running the Driver Installer:

Included with each individual Blu sensor is an included USB flash drive. On this drive you will find the serial number specific installation package. If the drive is damaged or misplaced, please contact Digital Doc Technical Services for assistance. Run this application with Administrative permissions to begin installation. Follow the prompts on the screen and when completed leave the checkboxes selected and select Finish. The settings for TwainCapture will open momentarily. Please proceed to the section with your preferred Dental Imaging Acquisition software for specific settings to accommodate the platform.

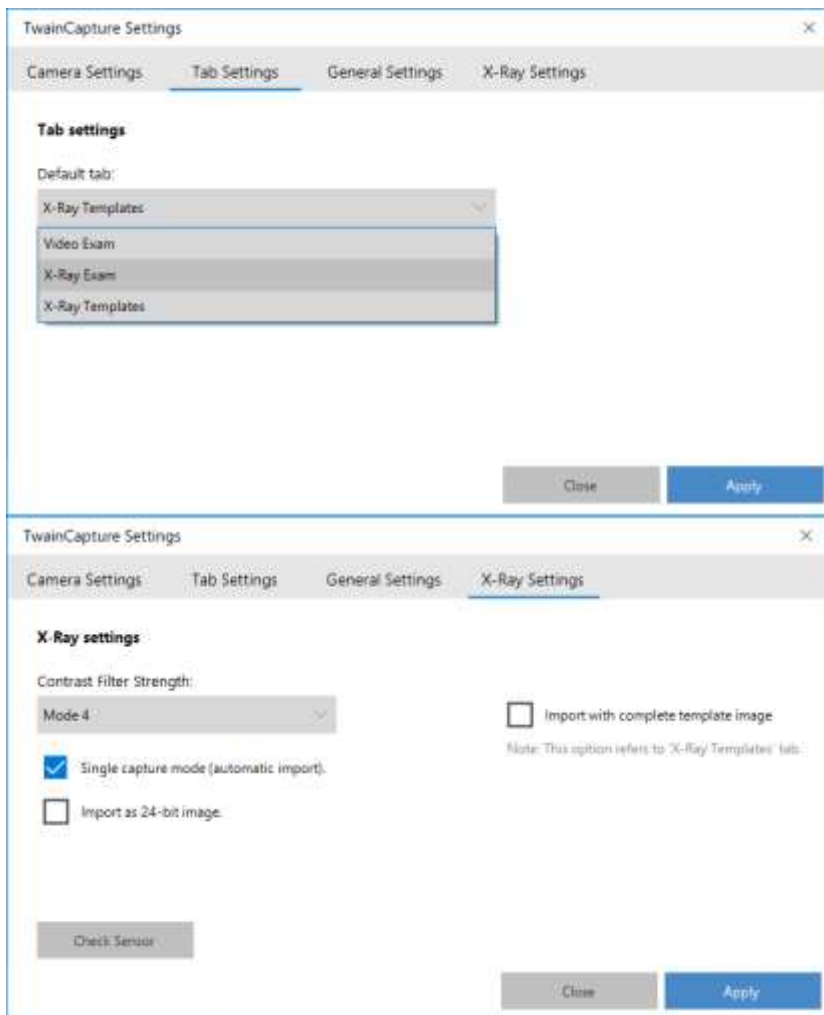




3. Dexis Imaging by Kavo:

Dexis Imaging requires an additional Third Party Imaging license for the Blu Sensor to Function. For assistance with licensing, please contact Kavo directly.

In the TwainCapture Settings in the Tab Settings Section, Select X-Ray Exam from the Default tab menu. Then, in the X-Ray Settings Tab, set the application into Single Capture Mode by checking the box. Apply these settings, and then open a patient in Dexis. If using a Dentrrix bridge, please refer to the ‘Dentrrix Bridge Fix’ section.

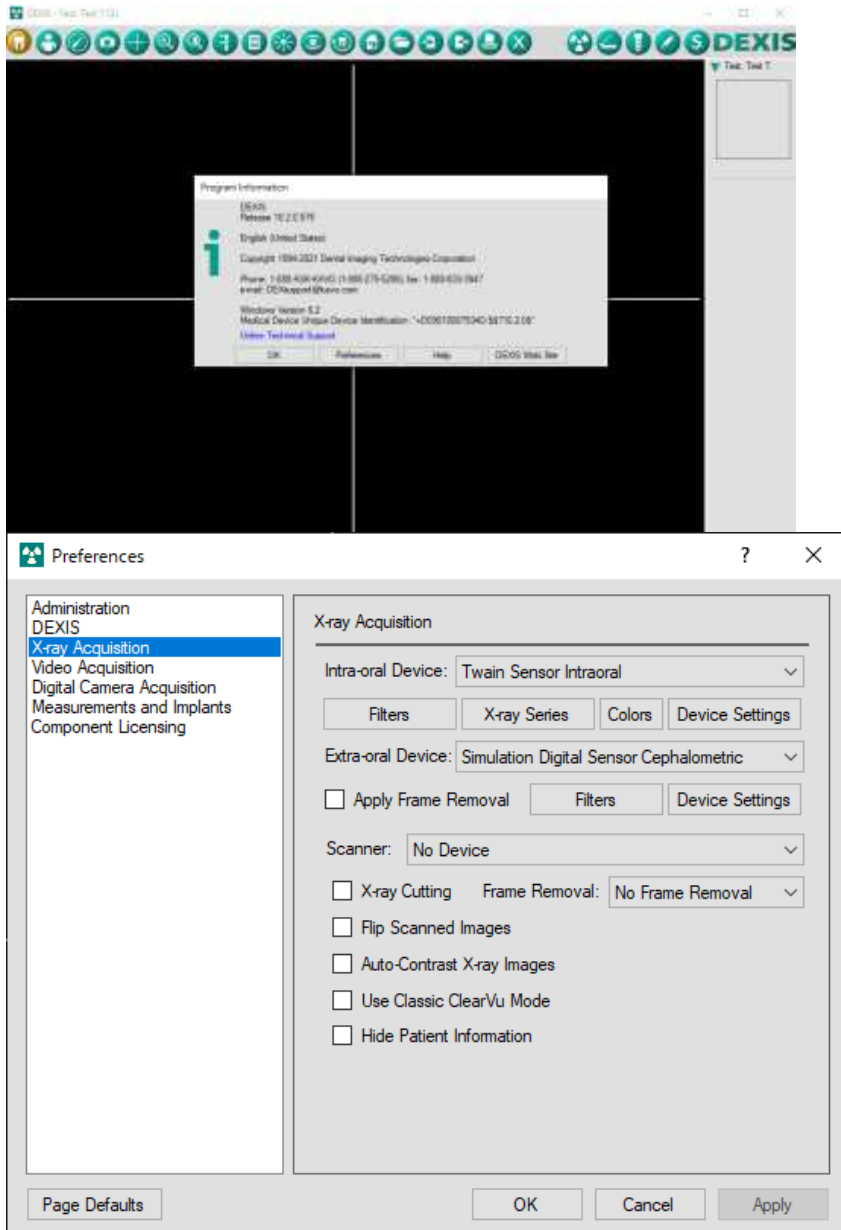


Continued on next page.



Digital Doc Blu X-Ray Sensor Configuration Guide

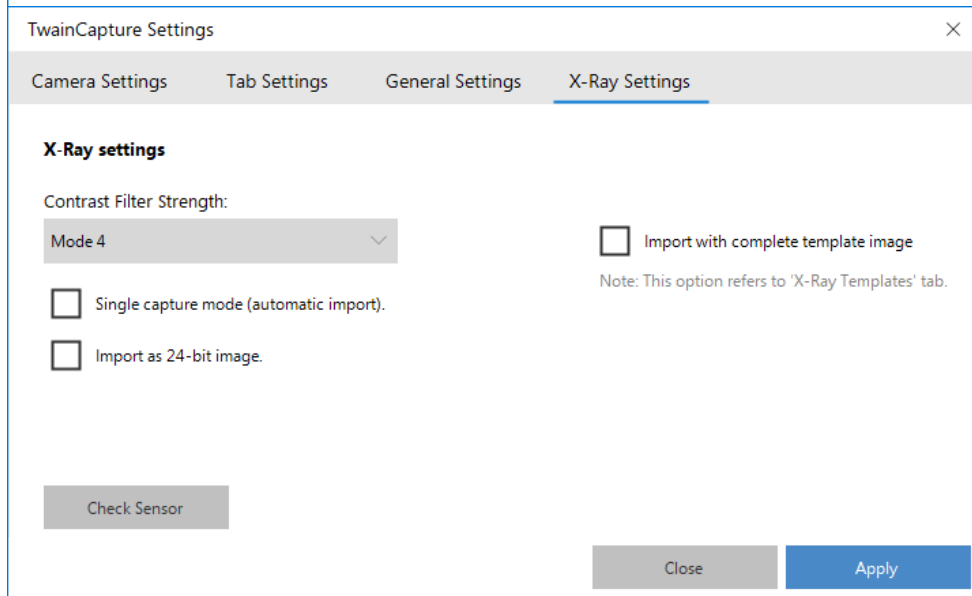
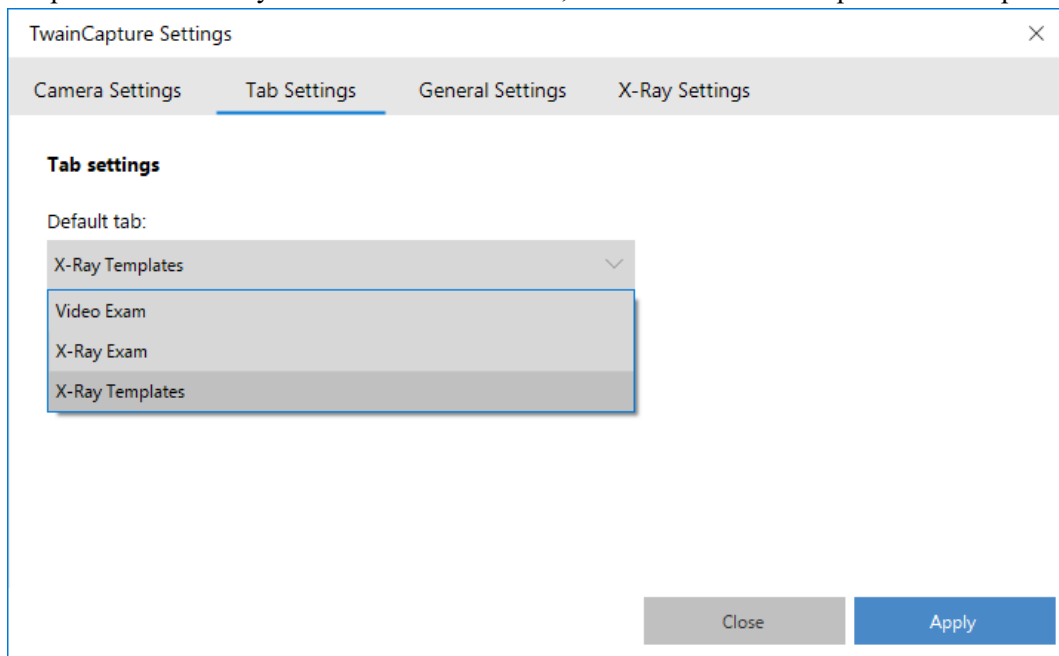
To get to the Dexis preferences, Click on 'DEXIS' in the top right corner, then click the Preferences button. In the X-Ray acquisition section, set the Intra-Oral device to Twain Sensor Intraoral. The office is now ready to operate their Blu X-Ray Sensor. For image adjustments, please refer to the 'Adjust Image Contrast Settings' section.





4. Eaglesoft by Patterson Dental:

In the TwainCapture Settings in the Tab Settings Section, Select X-Ray Templates from the Default tab menu. Then, in the X-Ray Settings Tab, ask the office if they would prefer an additional image of the completed template be created by the sensor driver. If Yes, Check the box for 'Import with complete template image'.

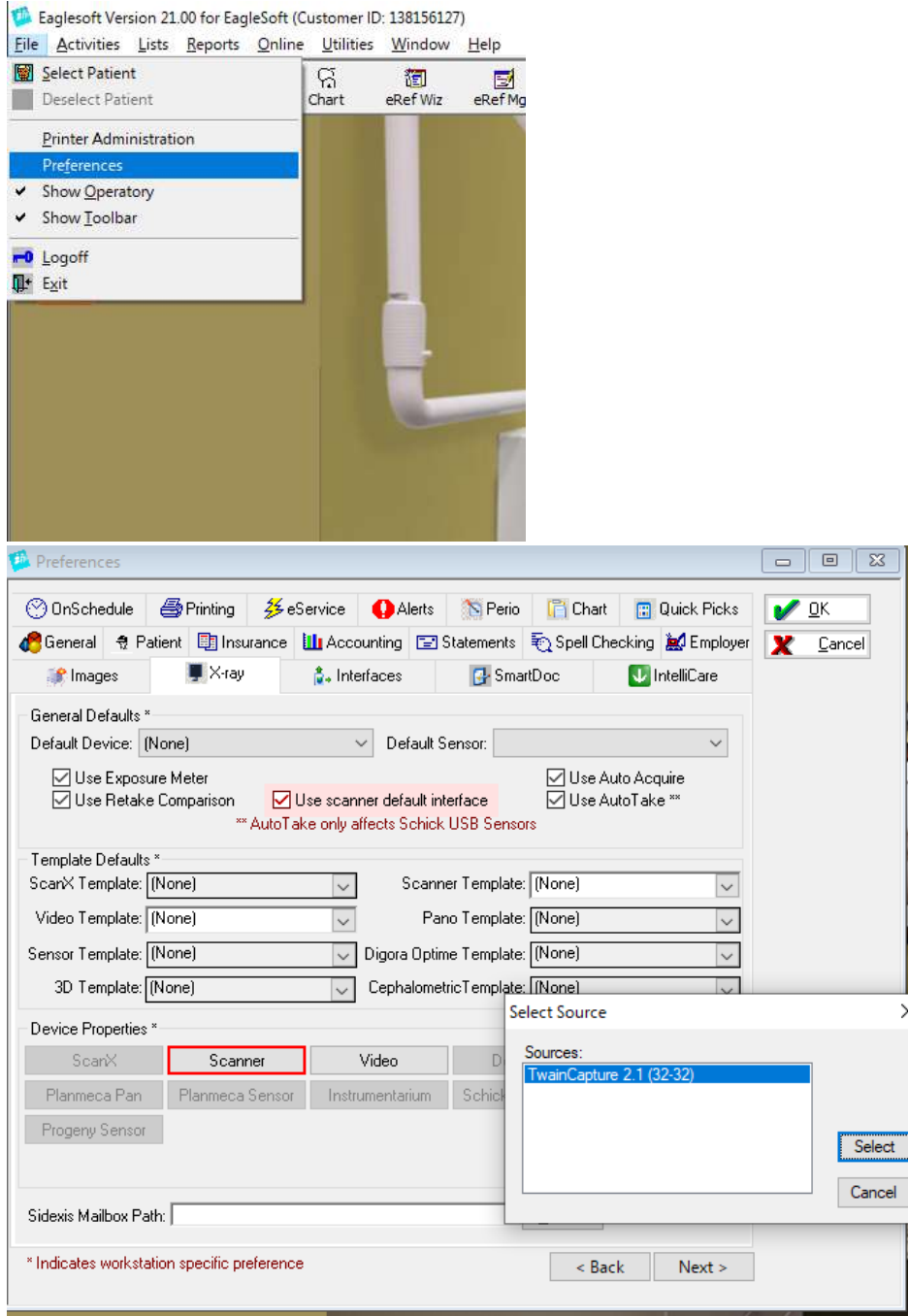


Continued on next page.



Digital Doc Blu X-Ray Sensor Configuration Guide

Open Eaglesoft and go to the File Menu, Select Preferences, and then select the X-Ray Tab. Check the box to 'Use scanner default interface'. Click the 'Scanner' button and select TwainCapture.

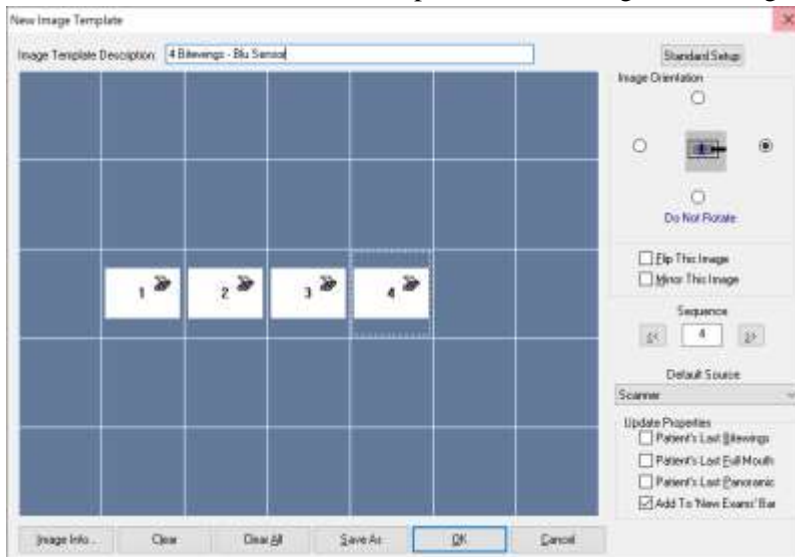


Continued on next page.

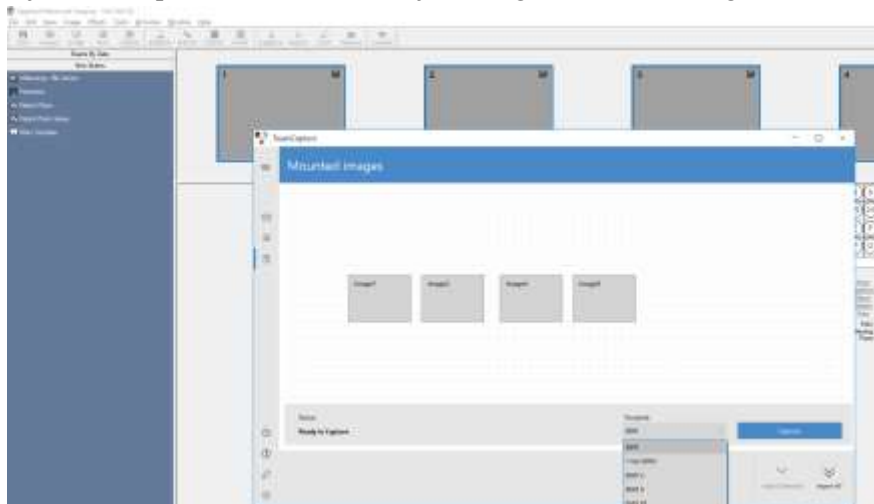


Digital Doc Blu X-Ray Sensor Configuration Guide

To configure mounts in Eaglesoft, select a patient and go to New Exams. Click Other Exams and click 'New'. In the new mount, click Custom Setup and ensure the Default Source is set to Scanner. In the grid section, click in each square in which the office would like an image in the mount. For each image it is the office's responsibility to ensure accurate tooth numbering and preferred sequence. Each image will NOT require rotation, mirror, or flip as these properties are managed by the driver. In the example a 4 Bitewing exam is created. The Blu Driver comes equipped with a few industry standard mounts. For custom mounts, please refer to the 'Creating Custom Mounts' section. If you enabled the 'Import with complete template image' option, you will add one additional image to each exam; this will allow the completed mount image to be integrated directly into the exam.



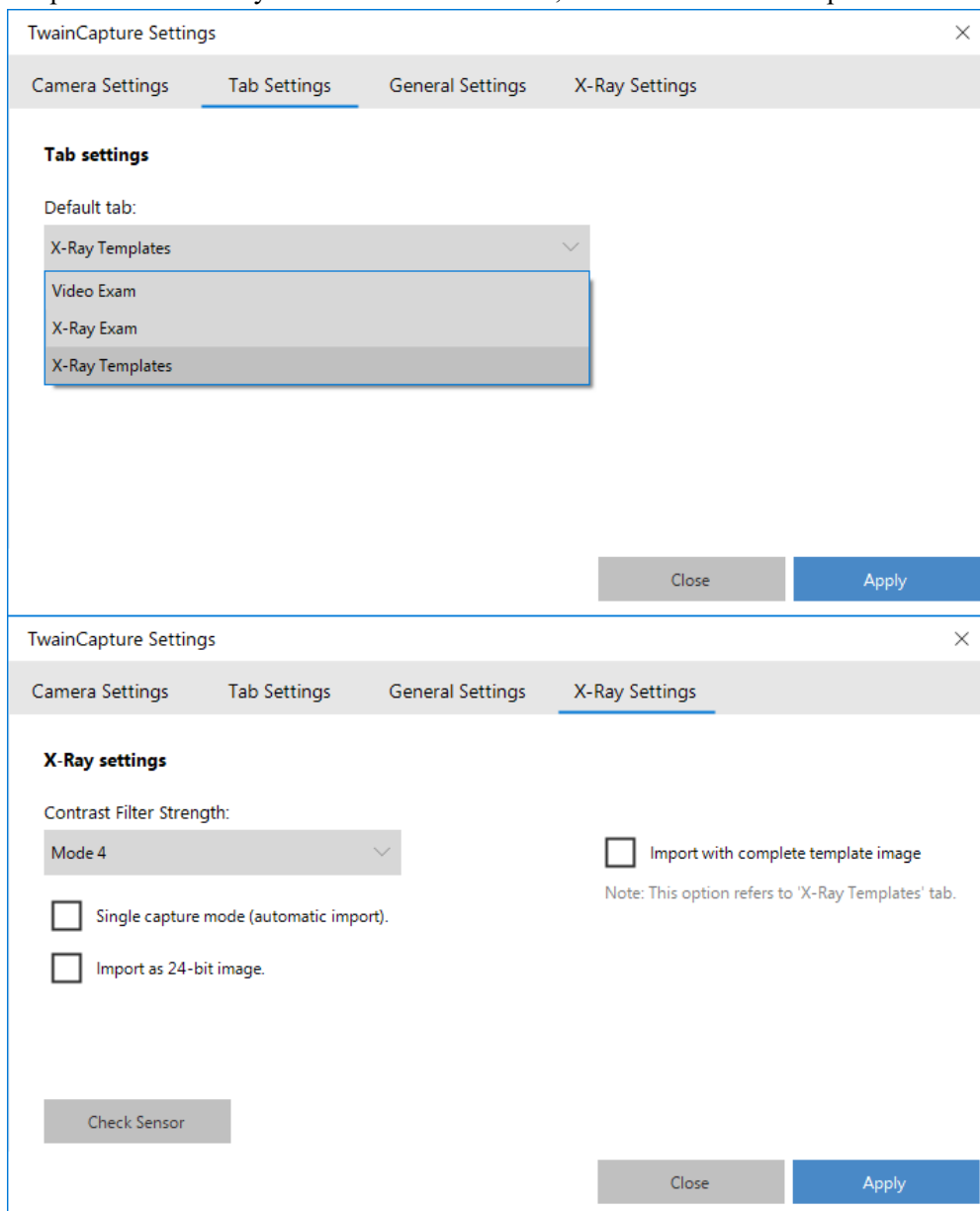
When operating the sensor in Template mode, please ensure you select the same mount in the driver that is selected in Eaglesoft. Click 'Capture' in the driver window and the office is ready to start the Exam. Repeat this process for the remaining mounts. The office is now ready to operate their Blu X-Ray Sensor. For image adjustments, please refer to the 'Adjust Image Contrast Settings' section.





5. Apteryx by PlanetDDS:

In the TwainCapture Settings in the Tab Settings Section, Select X-Ray Templates from the Default tab menu. Then, in the X-Ray Settings Tab, ask the office if they would prefer an additional image of the completed template be created by the sensor driver. If Yes, Check the box for 'Import with complete template image'.



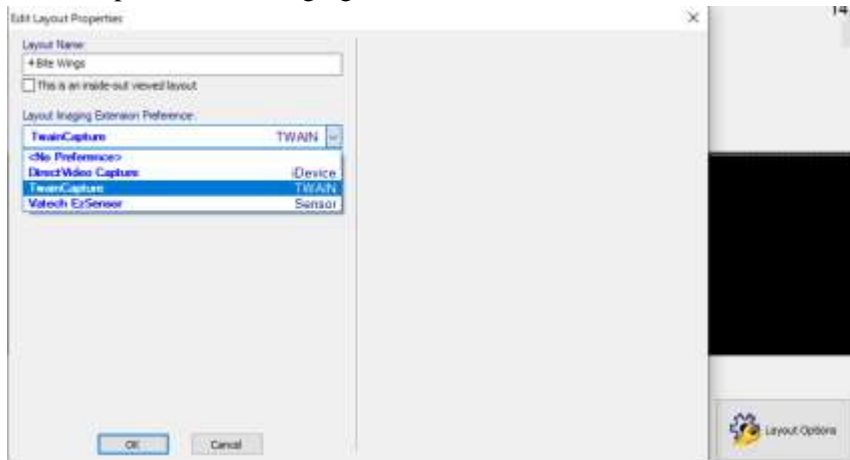


Digital Doc Blu X-Ray Sensor Configuration Guide

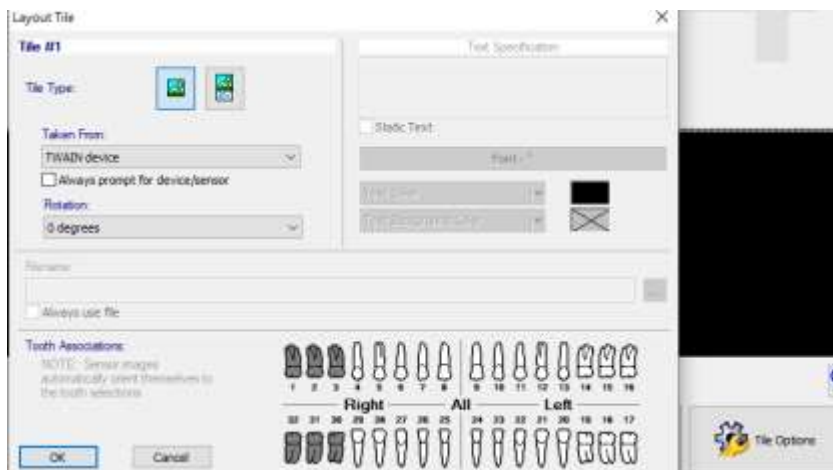
Open X-Ray vision and click 'Capture Layout'.



Click on 'Edit Layout Definitions' then click the Layout Options and provide the layout name, and Select TwainCapture as the Imaging Extension Preference.



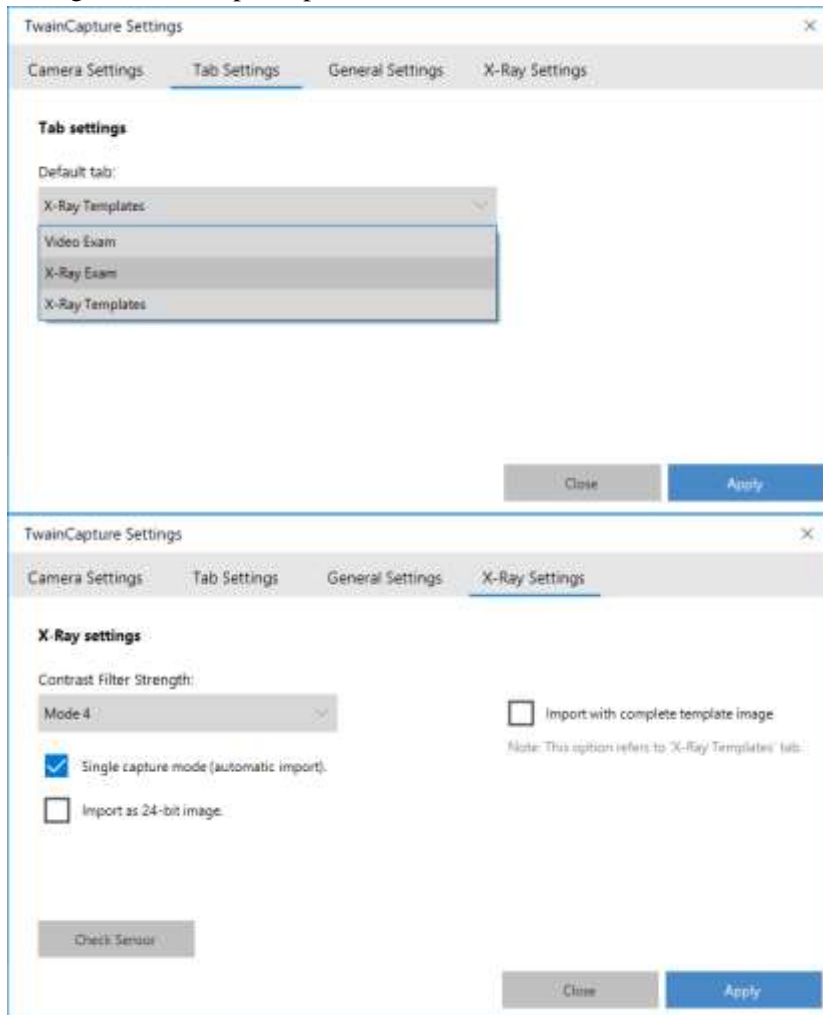
For each image in the layout, click Tile Options and set each tile for 0 degrees rotation. The rotation property is managed by the Sensor Driver. Save the Layout and repeat with any additional layouts. The office is now ready to operate their Blu X-Ray Sensor. For image adjustments, please refer to the 'Adjust Image Contrast Settings' section.





6. CurveHero Cloud:

In the TwainCapture Settings in the Tab Settings Section, Select X-Ray Exam from the Default tab menu. Then, in the X-Ray Settings Tab, set the application into Single Capture Mode by checking the box. Apply these settings, and then open a patient in CurveHero.

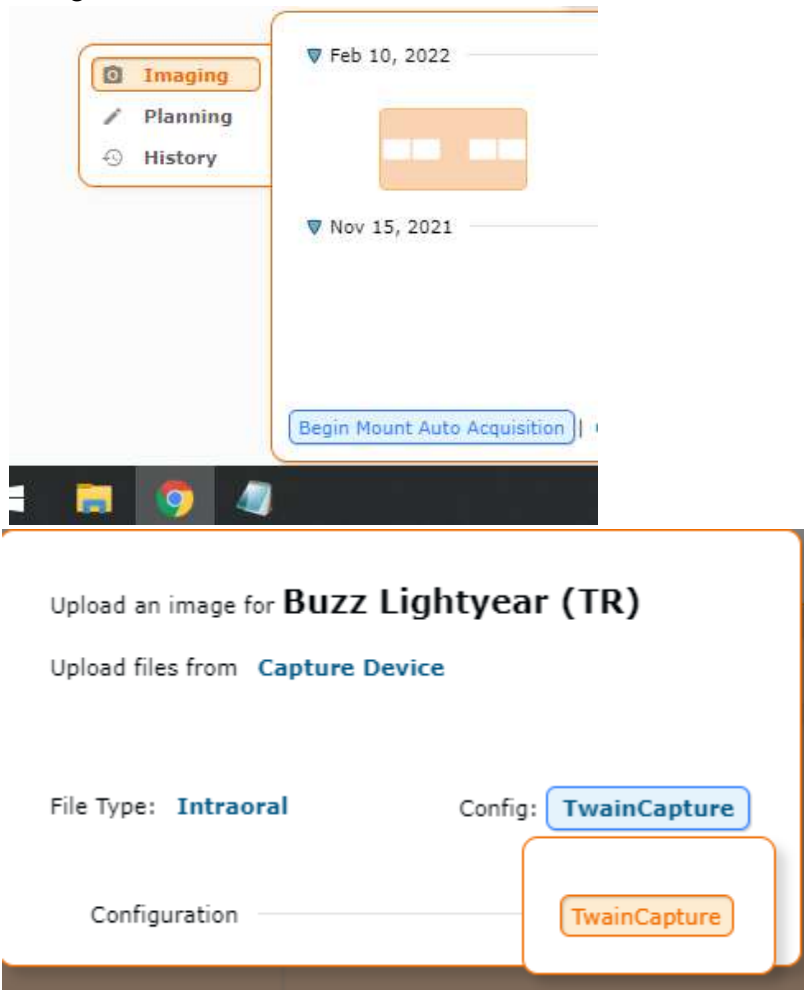


continued on next page.



Digital Doc Blu X-Ray Sensor Configuration Guide

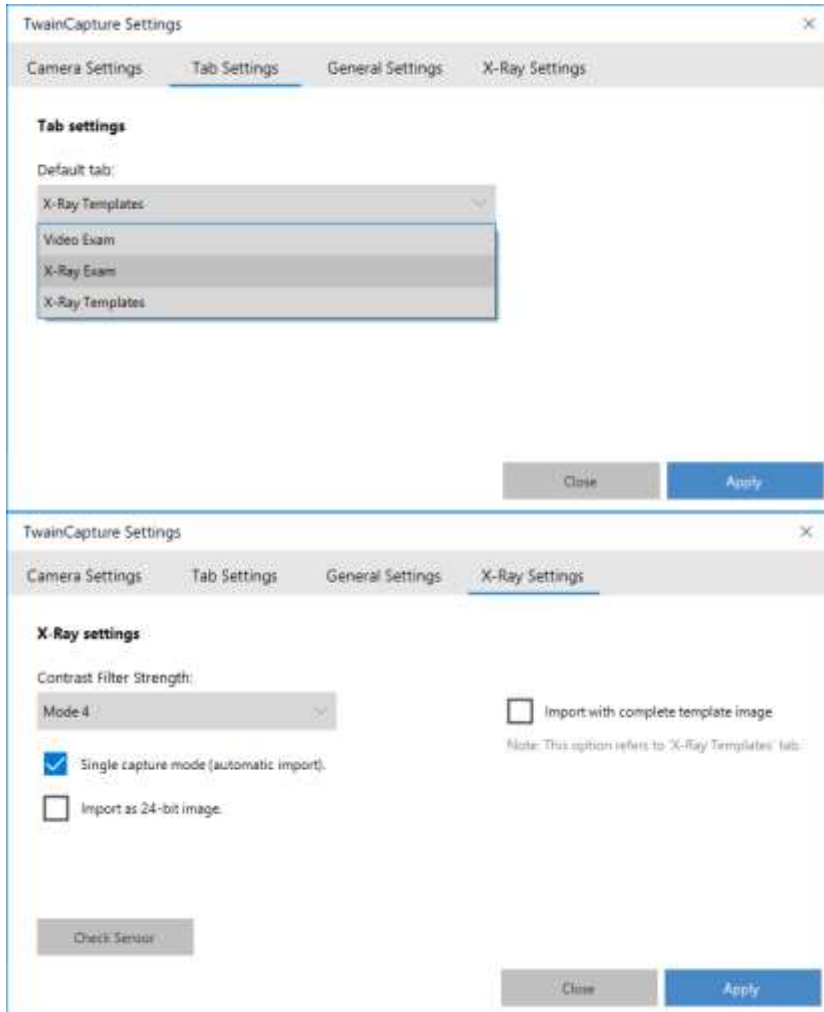
Open CurveHero and select a patient, Go to Charting, then Imaging. Select a mount and select 'Begin auto-mount'. In the pop-up window, select TwainCapture as the capture device and click 'Capture'. The office is now ready to operate their Blu X-Ray Sensor. For image adjustments, please refer to the 'Adjust Image Contrast Settings' section.





7. Dentrix Ascend & Dentrix Imaging Center:

In the TwainCapture Settings in the Tab Settings Section, Select X-Ray Exam from the Default tab menu. Then, in the X-Ray Settings Tab, set the application into Single Capture Mode by checking the box. Apply these settings, and then open a patient in Dentrix Ascend.

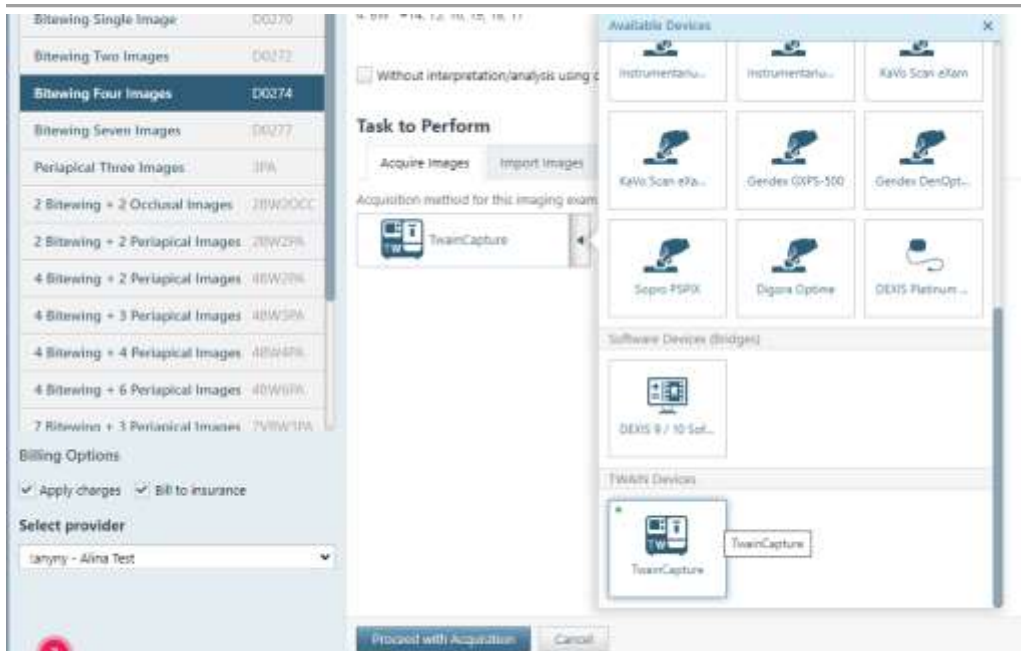
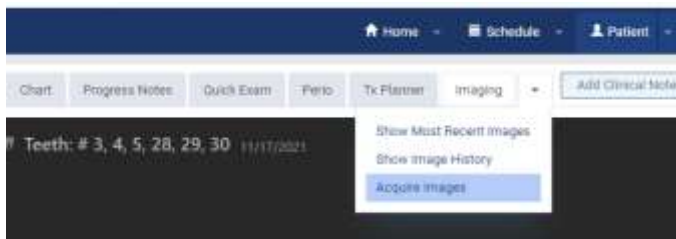


continued on next page.



Digital Doc Blu X-Ray Sensor Configuration Guide

In Dentrix Ascend, Click on the Patient Menu and go to Imaging. In the Imaging overview, click on the arrow next to imaging and select Acquire Images. Select the preferred mount and for the Acquisition Method, select TwainCapture, and proceed with acquisition. The office is now ready to operate their Blu X-Ray Sensor. For image adjustments, please refer to the 'Adjust Image Contrast Settings' section.





8. Sidexis 4 by Sirona:

In the TwainCapture Settings in the Tab Settings Section, Select X-Ray Templates from the Default tab menu. Then, in the X-Ray Settings Tab, ask the office if they would prefer an additional image of the completed template be created by the sensor driver. If Yes, Check the box for 'Import with complete template image'.

The image displays two screenshots of the TwainCapture Settings application. The first screenshot shows the 'Tab Settings' tab selected, with a dropdown menu open for 'Default tab'. The menu options are 'X-Ray Templates', 'Video Exam', 'X-Ray Exam', and 'X-Ray Templates'. The second screenshot shows the 'X-Ray Settings' tab selected. Under 'X-Ray settings', the 'Contrast Filter Strength' is set to 'Mode 4'. The checkbox for 'Import with complete template image' is checked. Below this checkbox is a note: 'Note: This option refers to 'X-Ray Templates' tab.' There are also checkboxes for 'Single capture mode (automatic import)' and 'Import as 24-bit image'. A 'Check Sensor' button is located at the bottom left of the X-Ray Settings section. Both screenshots have 'Close' and 'Apply' buttons at the bottom right.

Continued on next page.

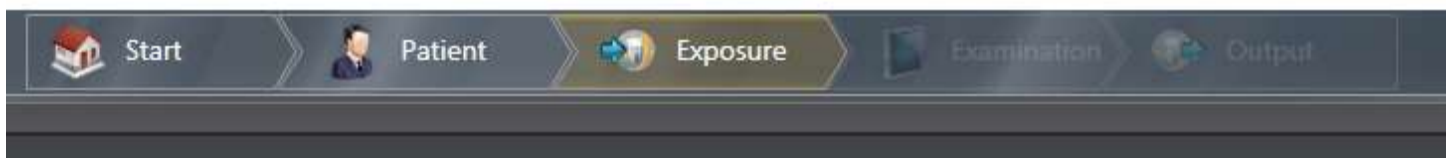


Digital Doc Blu X-Ray Sensor Configuration Guide

Open Sidexis 4 and select a patient. Click on Exposure, TwainCapture will be listed as one of the capture devices. When TwainCapture opens, select your exam from the Template menu, when ready, click 'Capture' the status will then instruct you to 'Expose the X-Ray'.

The screenshot shows the TwainCapture Settings dialog box with the X-Ray Settings tab selected. The dialog has a title bar with a close button (X) and four tabs: Camera Settings, Tab Settings, General Settings, and X-Ray Settings. The X-Ray Settings tab is active and contains the following elements:

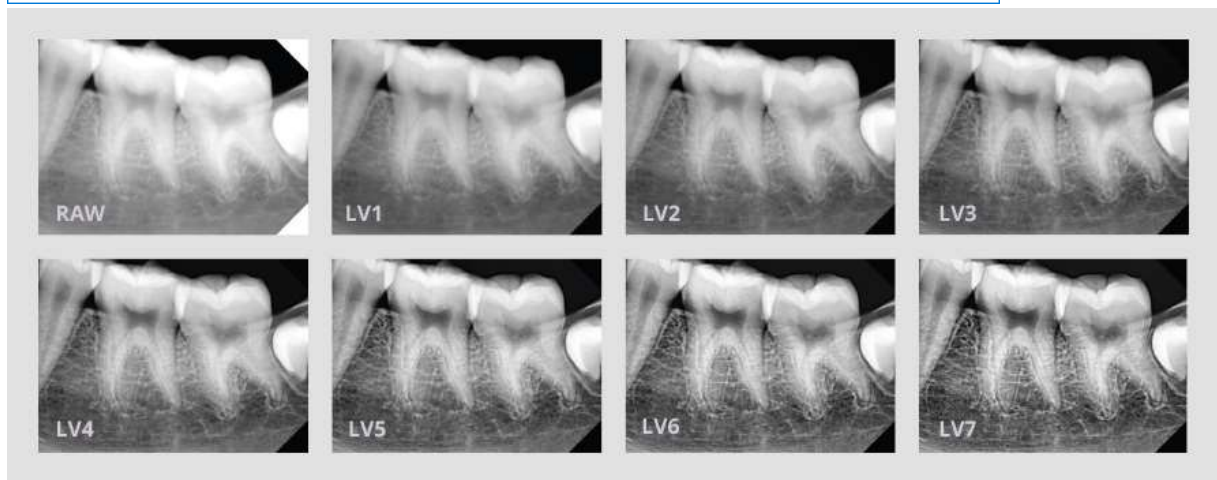
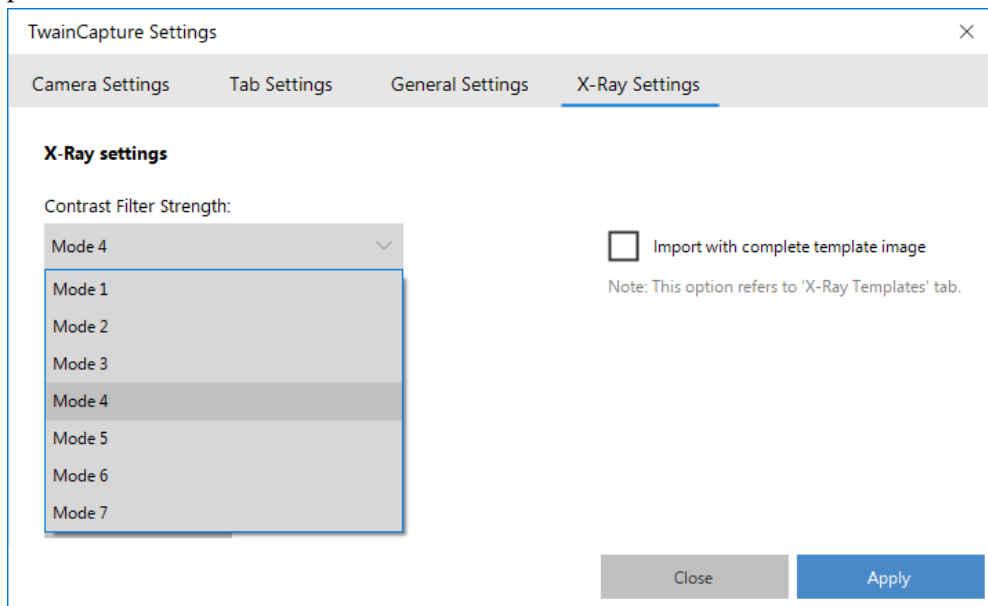
- X-Ray settings** section header.
- Contrast Filter Strength: Mode 4 (dropdown menu).
- Single capture mode (automatic import).
- Import as 24-bit image.
- Import with complete template image. Below this checkbox is a note: "Note: This option refers to 'X-Ray Templates' tab."
- Check Sensor button (disabled).
- Close button (disabled).
- Apply button (active).





9. Adjusting Image Contrast Settings:

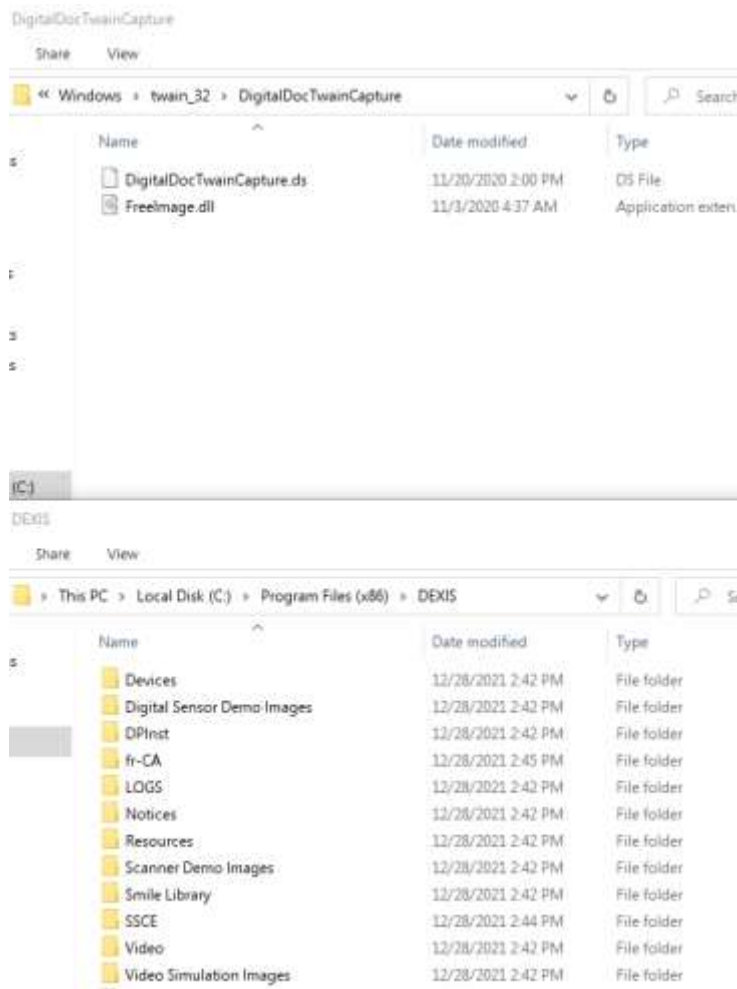
The Blu Sensor's driver has available a range of filtering strength. These options are available in the TwainCapture Settings menu. This menu is accessible in the Windows Start menu under the Digital Doc folder. On the 'X-Ray Settings' tab, there is a menu indicating Mode 4 by default. If the office wants additional Contrast and Sharpness applied to the images increase the Mode value. Digital Doc recommends making incremental changes and evaluating the resulting image. Once set, the filter values are applied by the driver independently of any Dental imaging platform. Ultimately, these filters are adjustable at the discretion of Dental or Medical professionals.





10. Dentrix Bridge Fix

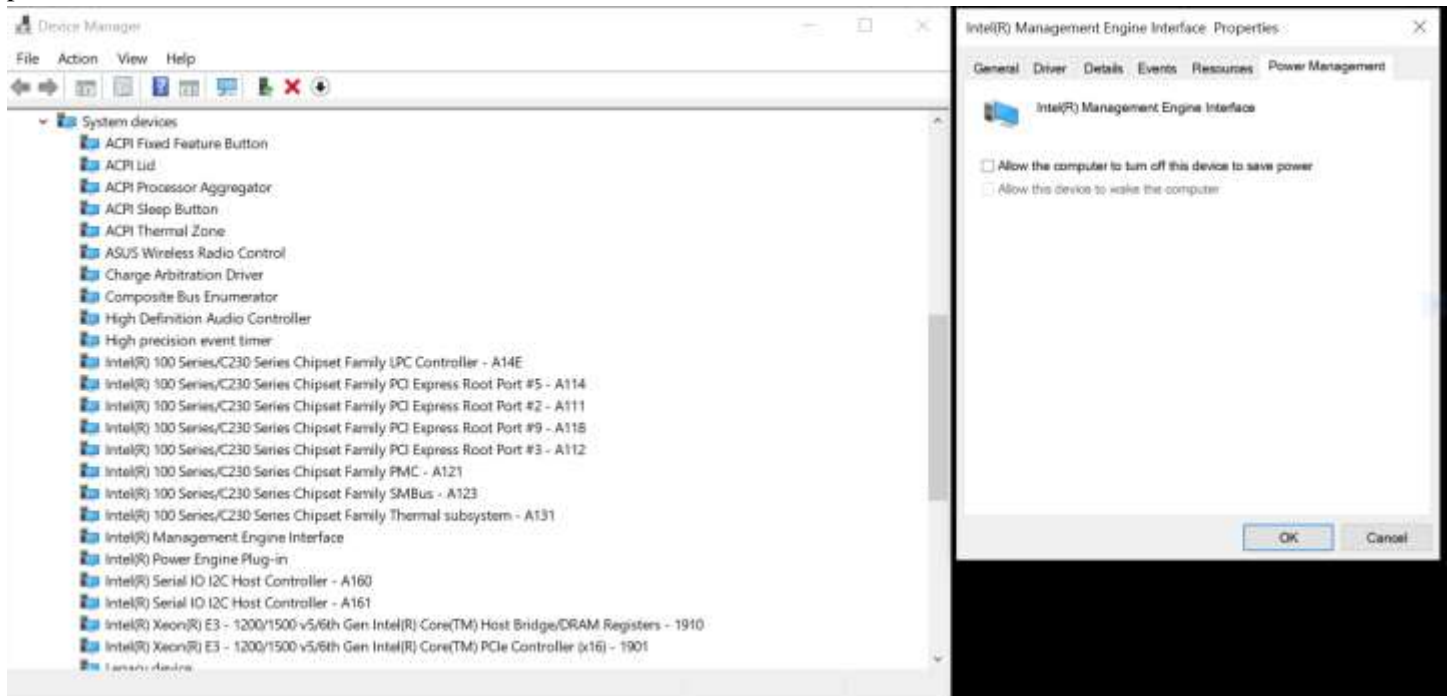
When attempting to run certain types of TWAIN drivers in your preferred Dental imaging application, you may encounter an issue where the Twain driver is installed but it not listed as an available source. This is a Windows permission error for accessing subdirectories in the twain_32 folder. To resolve this, Copy the 2 files contained in the directory "C:\Windows\twain_32\DigitalDocTwainCapture\" into the same directory as your acquisition software. In the case of Dexis 10, this is "C:\Program Files (x86)\Dexis\". If you require assistance with this step, please contact Digital Doc Technical Services.





11. Troubleshooting

Lines in the image are the result of communication limitations caused by power management on system resources. In the Windows Device Manager, under 'System Devices', inspect the properties of the 'Intel Management Engine Interface'. In these properties, select Power Management and uncheck the box for 'Allow the computer to turn off this device to save power'. You may repeat this process for each device under the 'Universal Serial Bus Controllers' for optimal performance.



12. Contact Digital Doc Technical Support

If you are experiencing difficulty with installation you may contact Digital Doc's Technical Support team.

Phone: 800-518-1102

Email: Support@Digi-Doc.com

Website: www.Digi-Doc.com

Hours: M-F | 7am-4pm PST