

# NETWORK DATABASE SETTINGS

## REQUIREMENTS

### PC:

#### Minimum requirements:

Model	Personal Computer Intel Core i5 3.2 GHz
RAM	4 GB DDR3
HDD	1TB SATA
OS	Windows 8.1 Pro or higher
GRAPHIC CARD	ATI 5450 1GB
Monitor	1024x768 pixels at 65.000 colors (ideal 1280x1024 16 million of colors 32 bits)
Ethernet card	2x Intel 10/100/1000 (no ceph) 3x Intel 10/100/1000 (with ceph)

\*2 minimum ethernet cards are mandatory for X-View device

#### recommended features for best performance:

- CPU: Personal Computer minimum Intel Core i7-6700 3.4 8M 4C
- RAM: 8 GB DDR4-2133 NECC
- SSD Hard Disk
- OS: Windows 10 Pro

### PC ENVIRONMENT:

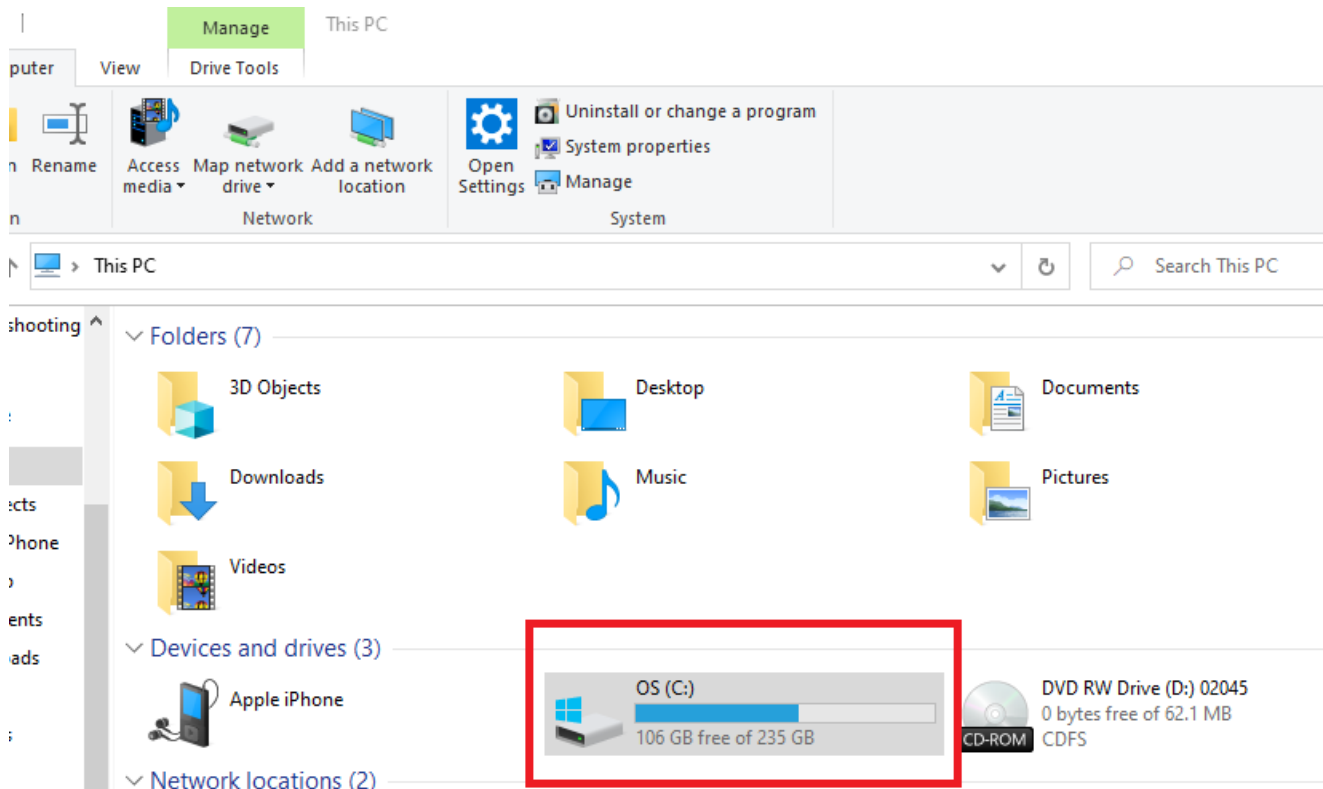
- Updated Operating system and drivers
- Device directly connected to the PC: no USB hub or ethernet switch
- Disabled Network firewall
- No antivirus

### NETWORK:

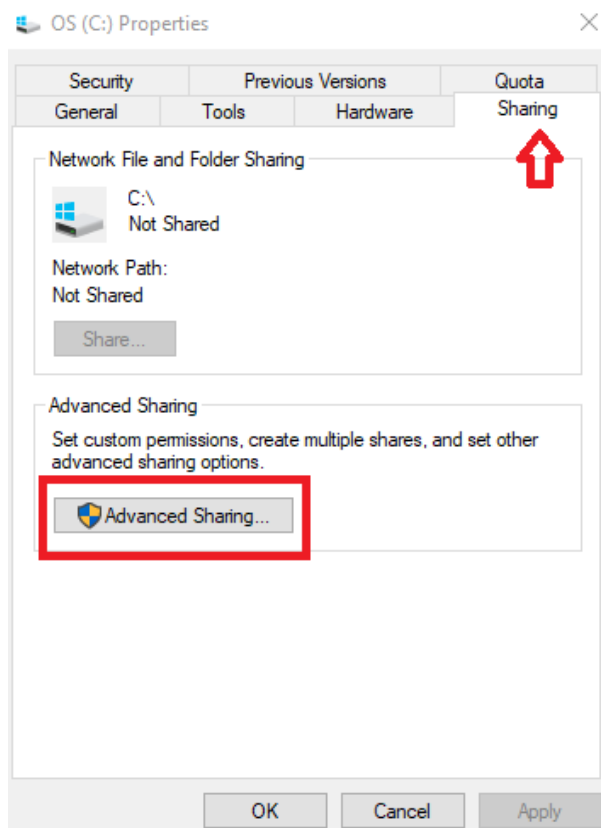
- Cablate connection
- Performant 1Gb/s Switch

## A. HOW TO SHARE THE DATABASE FROM SERVER PC

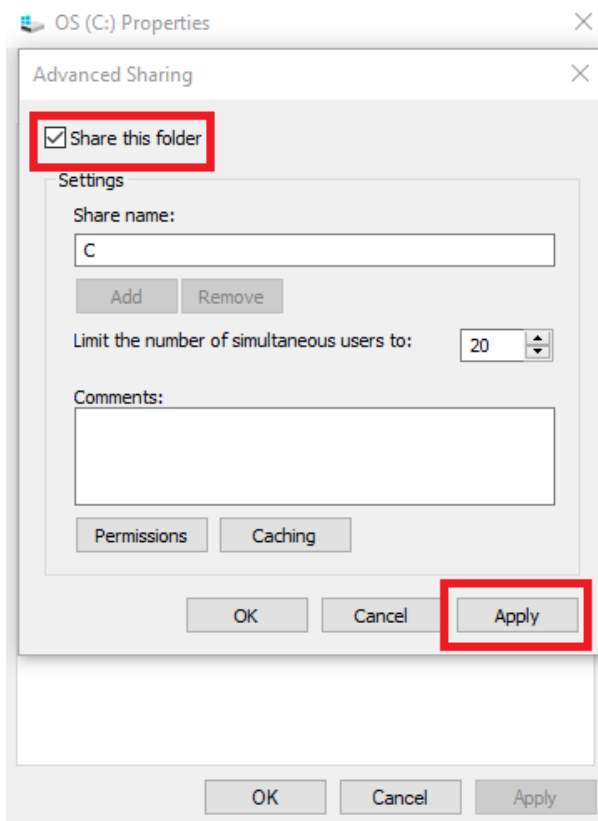
1. Select "properties" of disk where the database is located (for example C:)



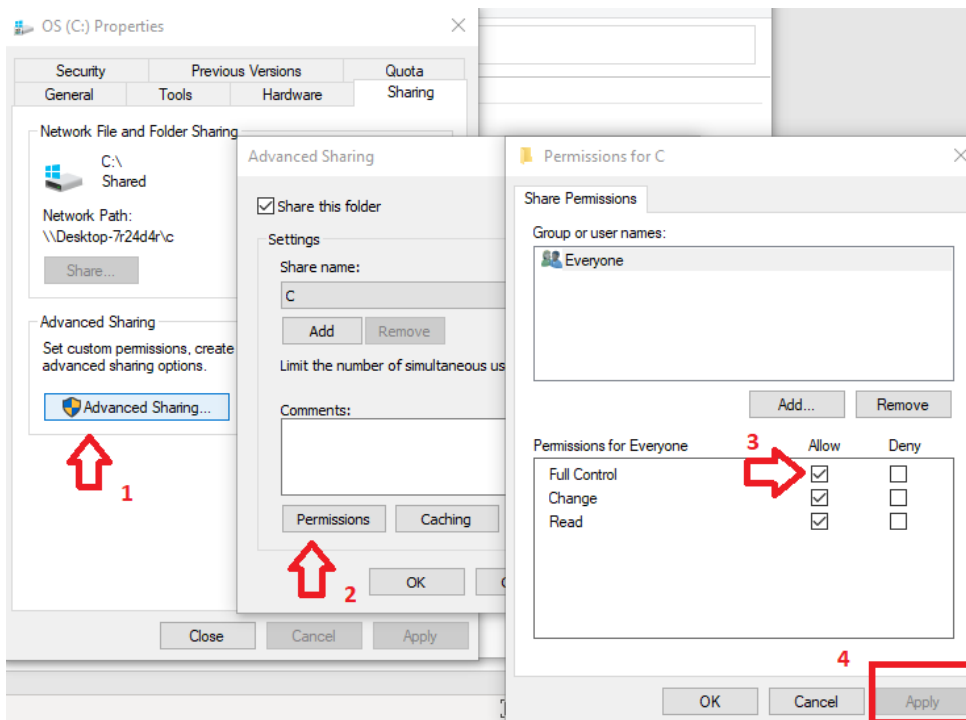
2. go to "sharing" and then click on "advanced sharing"



3. select "share this folder" → "apply"



4. check the write\read permissions

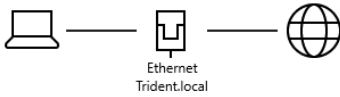


## B. How to set fixed IP addresses of the server PC in the network

- go on Ethernet settings “change adapter option” → “Ethernet” → “properties”

### Status

#### Network status



You're connected to the Internet

If you have a limited data plan, you can make this network a metered connection or change other properties.

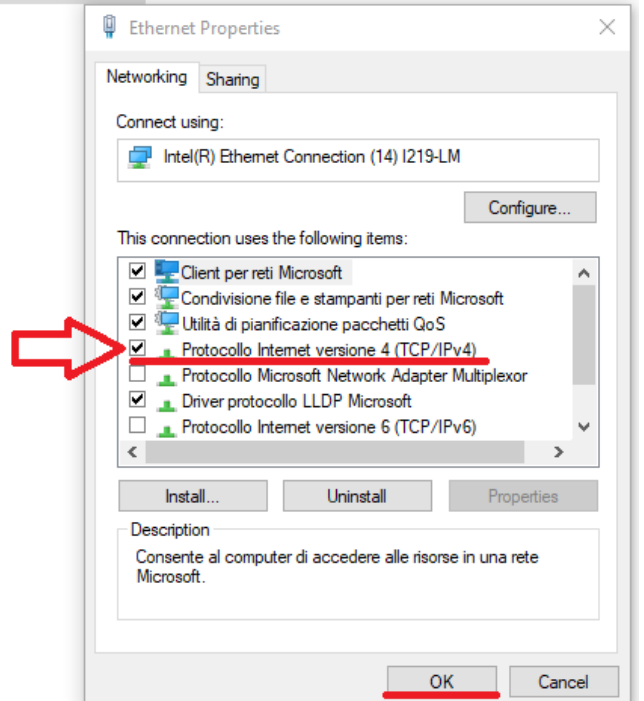
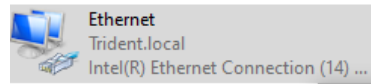
Ethernet 25.7 GB  
From the last 30 days

Properties Data usage

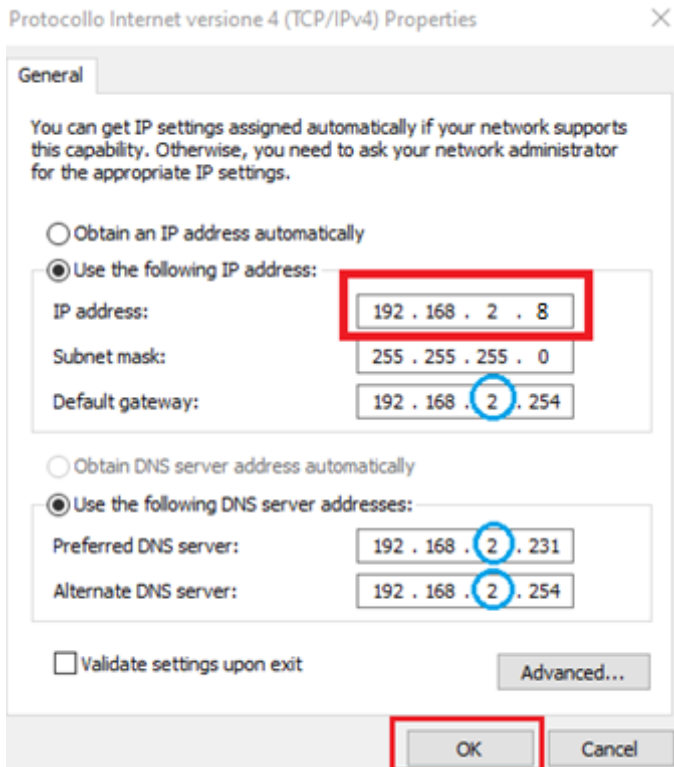
Show available networks  
View the connection options around you.

#### Advanced network settings

- Change adapter options**  
View network adapters and change connection settings.
- Network and Sharing Center  
For the networks you connect to, decide what you want to share.
- Network troubleshooter  
Diagnose and fix network problems.

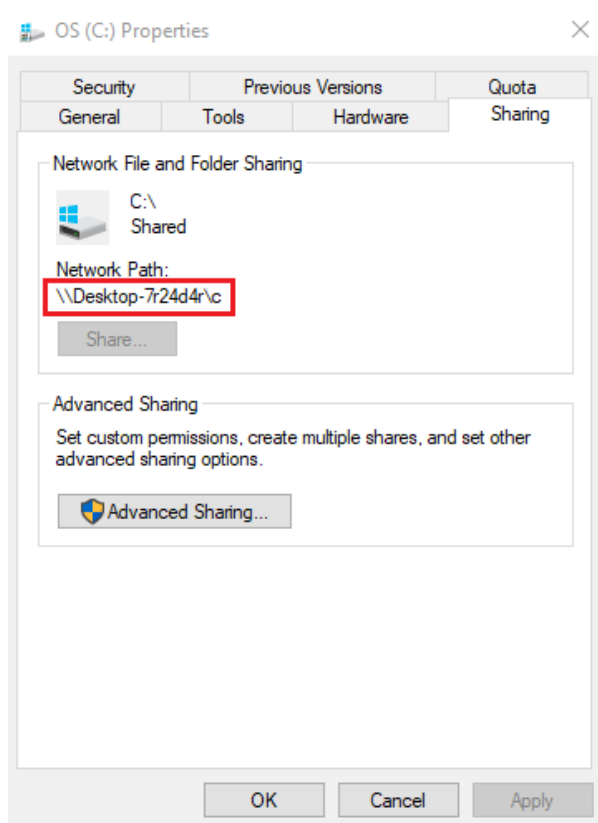


- Set the IP (example) → “OK”

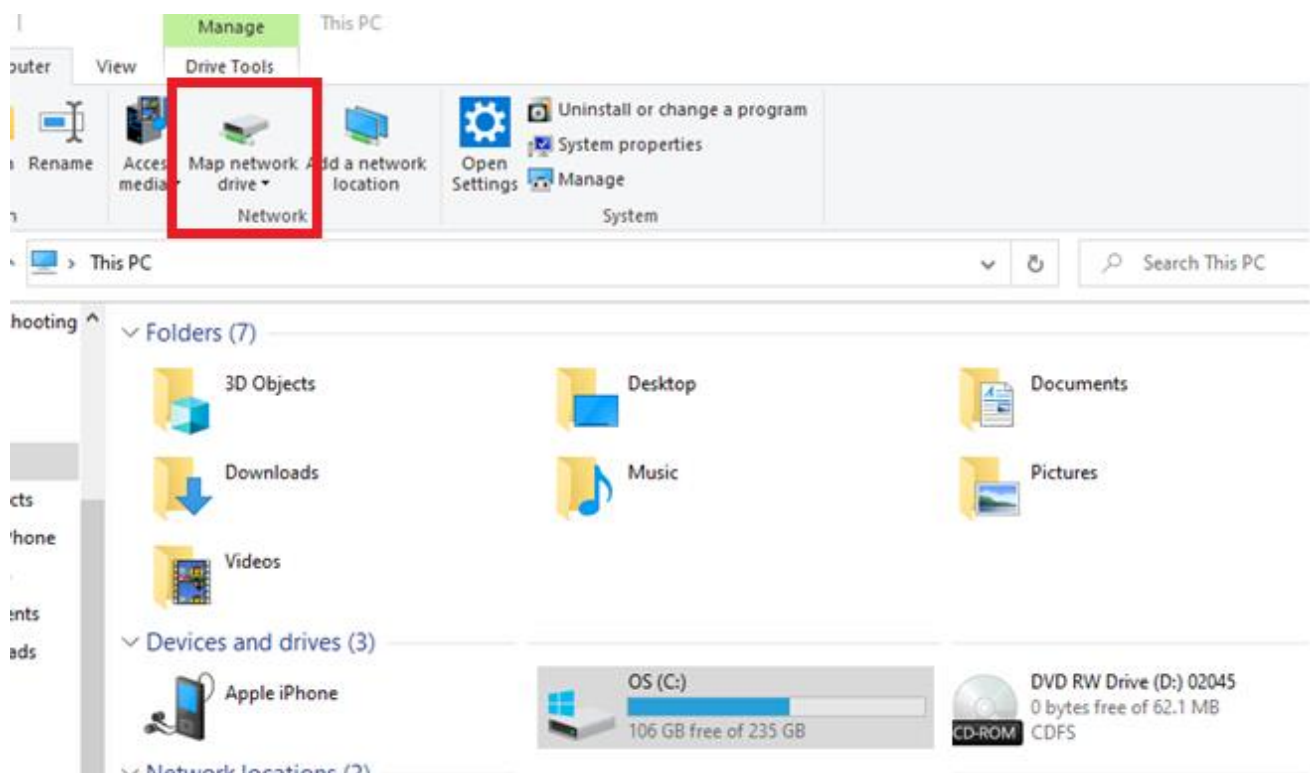


### C. How to connect the server PC to the client PC

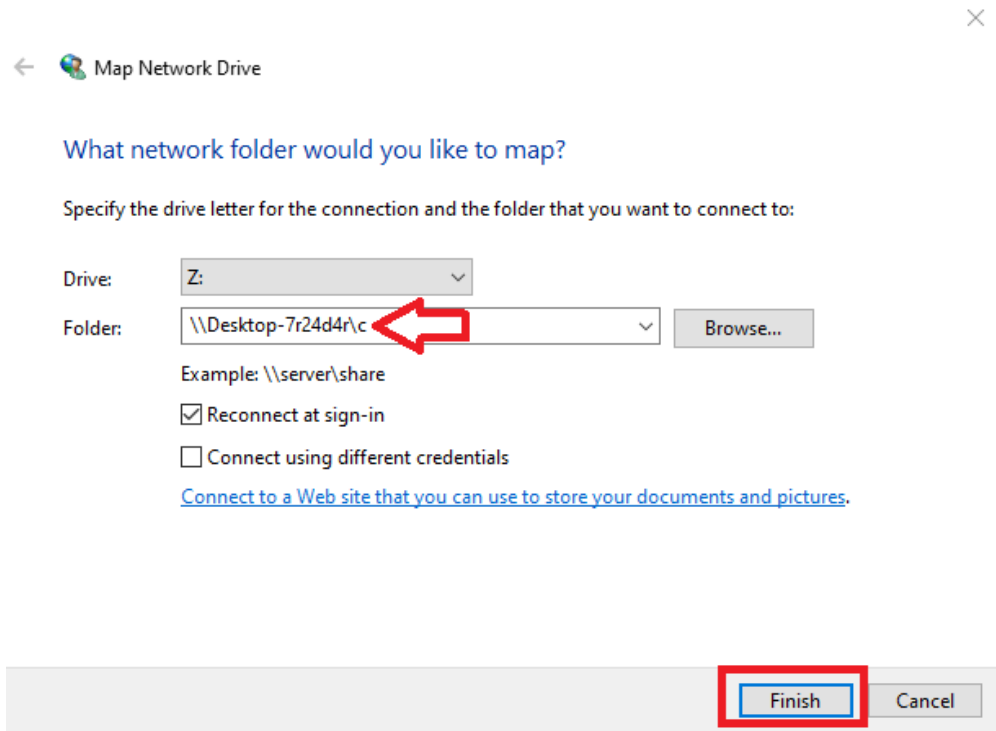
7. On the server pc copy the network path you find in "disk C:" → "properties" → "sharing" → copy the name on "network path"



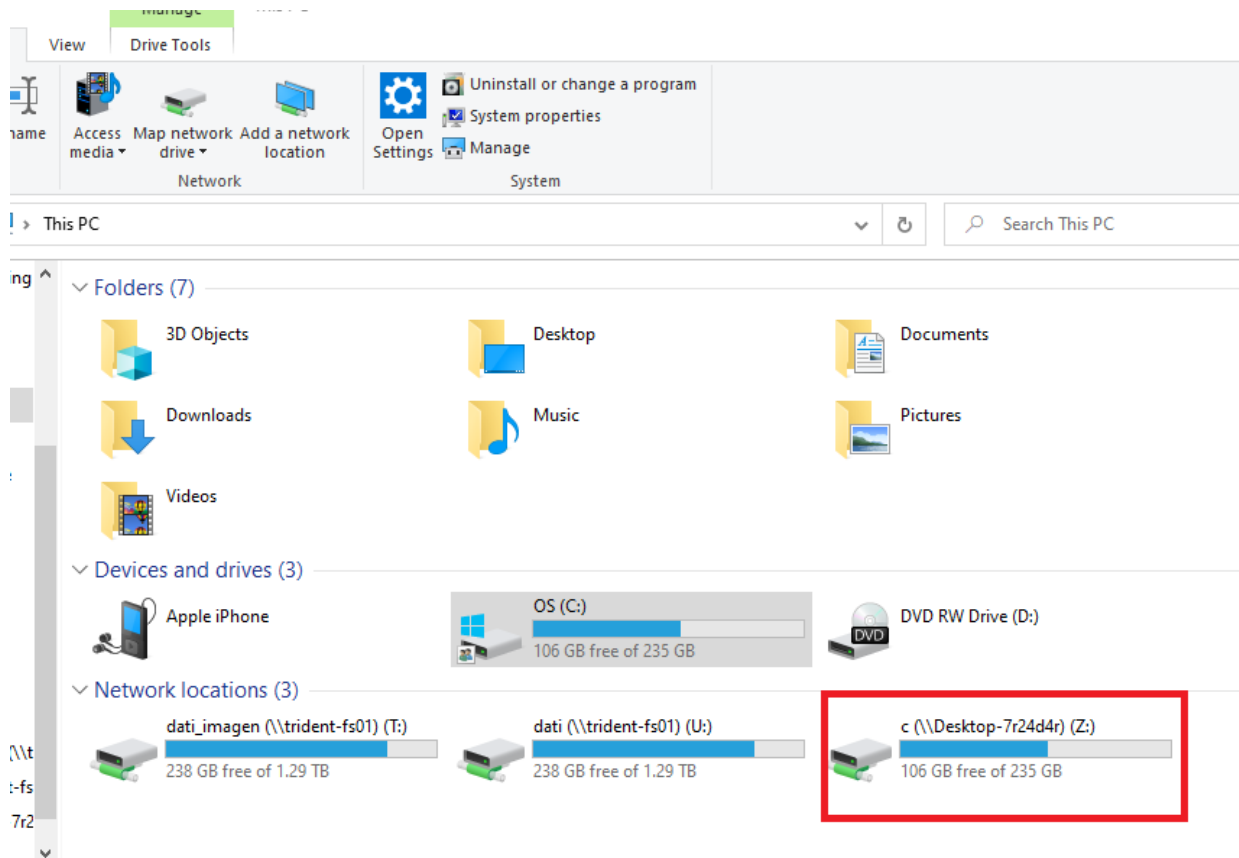
8. go on "map network drive" of the client PC




9. copy the Network path name on "Folder:" → "finish"



10. will appear the shared disk with Network path name





11. map again the shared disk → select the drive → use the IP that you set before → “finish”  
( [\\IPADDRESS\disk](#) )

←  Map Network Drive

What network folder would you like to map?

Specify the drive letter for the connection and the folder that you want to connect to:

Drive:   1

Folder:   2

Example: \\server\share

Reconnect at sign-in

Connect using different credentials

[Connect to a Web site that you can use to store your documents and pictures.](#)

- Click on “yes” → “Finish”


Map Network Drive

Attempting to connect to \\192.168.2.8\c...

want to connect to:

Drive:

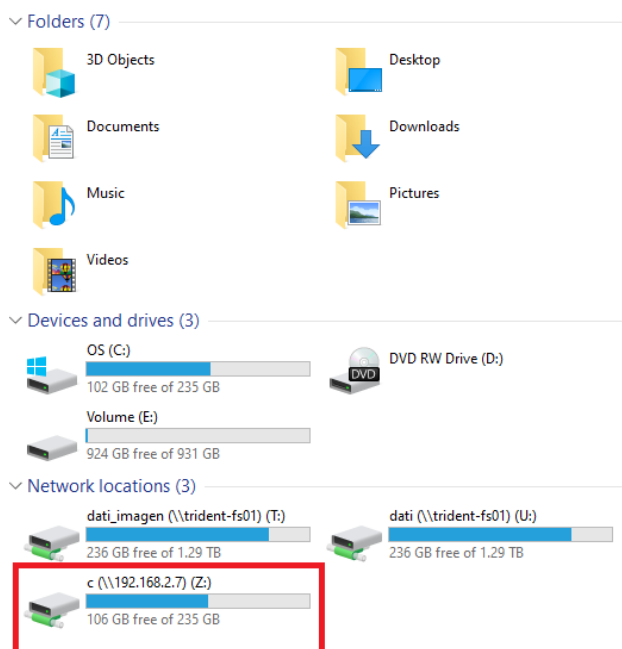
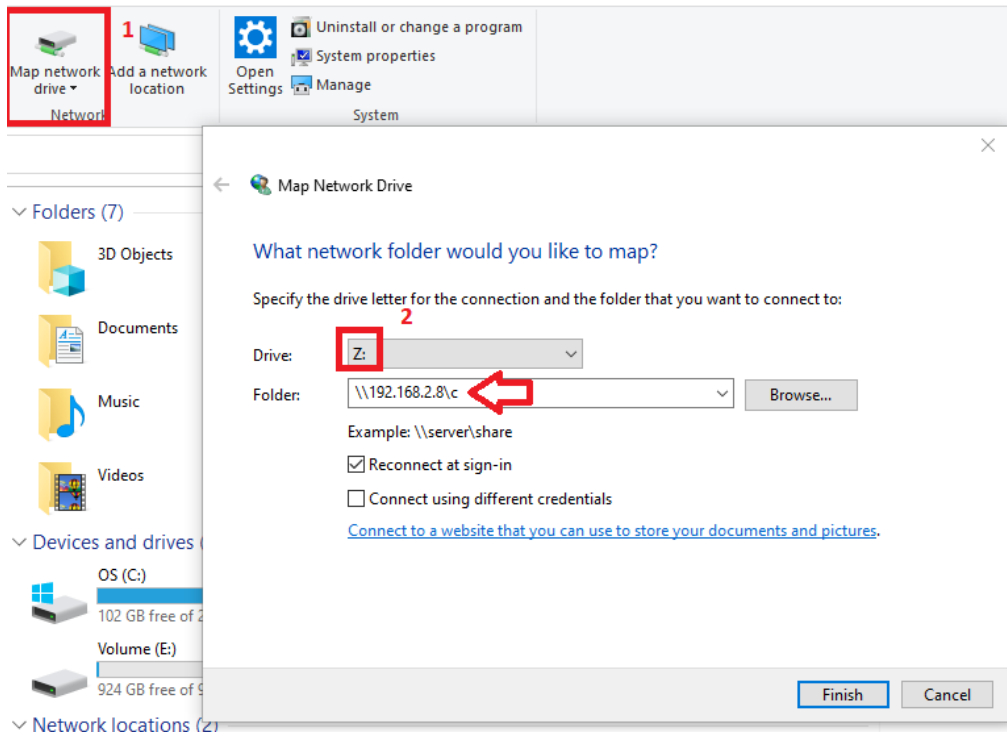
Folder:

 The device Z: has a remembered connection to \\Desktop-7r24d4r\c. Do you wish to replace the current connection with \\192.168.2.8\c?

**NB.** you will find the IP name only in the client pcs

## HOW TO SET THE DATABASE ON CLIENT PC

1. Map the "disk C:" on the client pc → write the IP you choose in the server pc settings



**NB. The IP of the disk is the IP address selected**

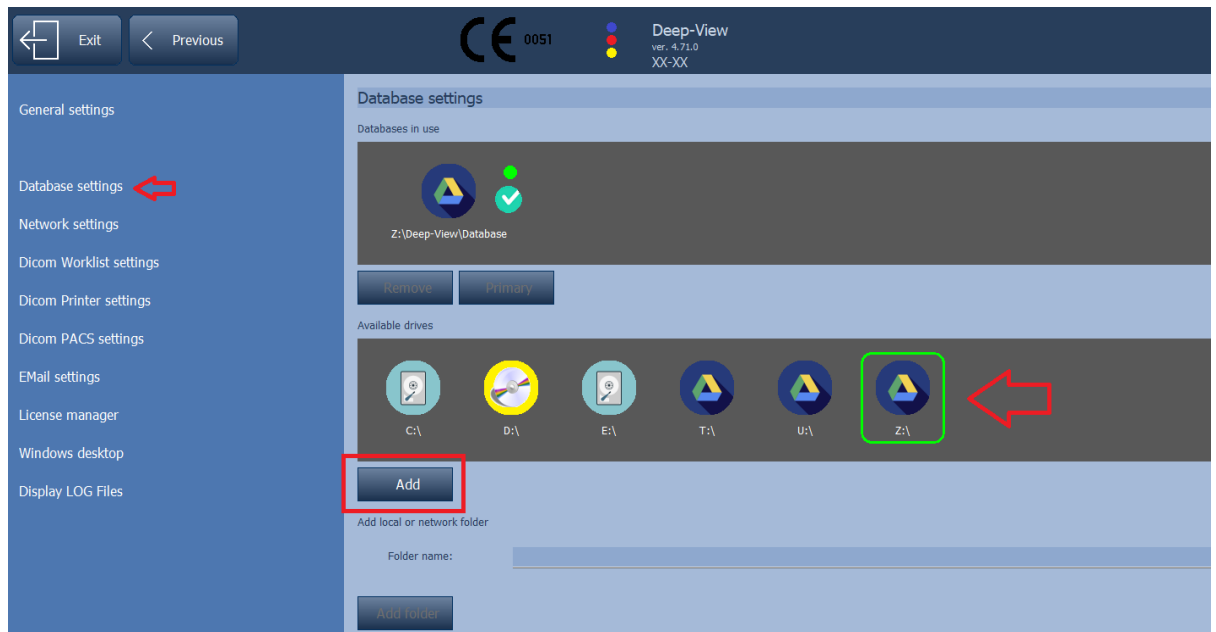


## 2. DEEVIEW SETTING

- Go on DeepView and click on “settings” → “database settings”



- Then select the disk Z: and press “Add”



**NB. If the customer has another database installed, he must keep it and add the disk Z: as primary database**